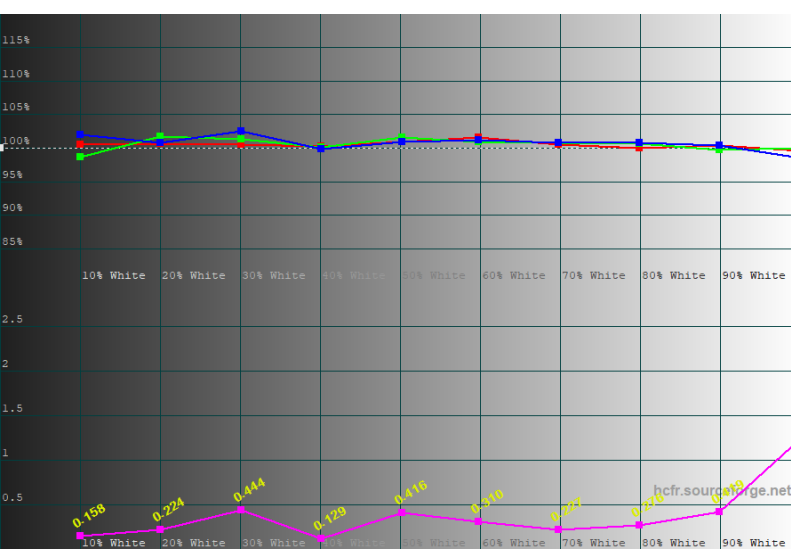


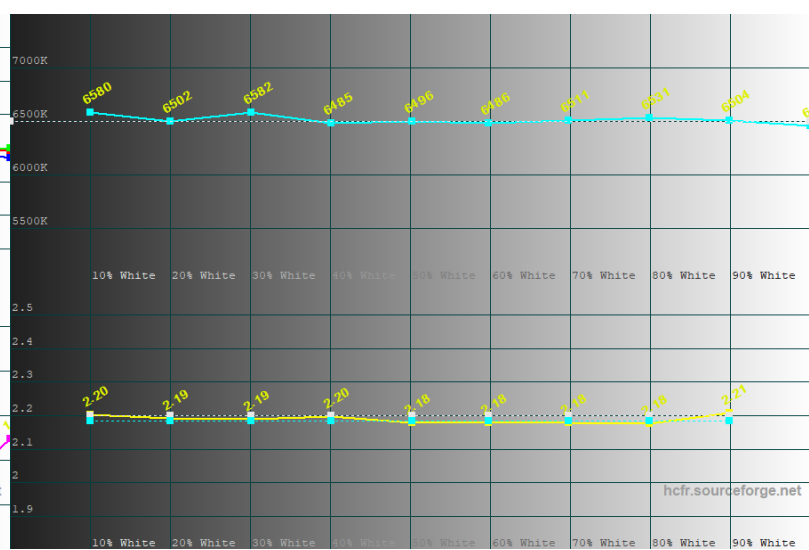


System data for file: Color Measures3
 Sensor: X-Rite i1 Pro 2
 Generator: View images [GDI]
 Calibration by:
 Display:
 Note:

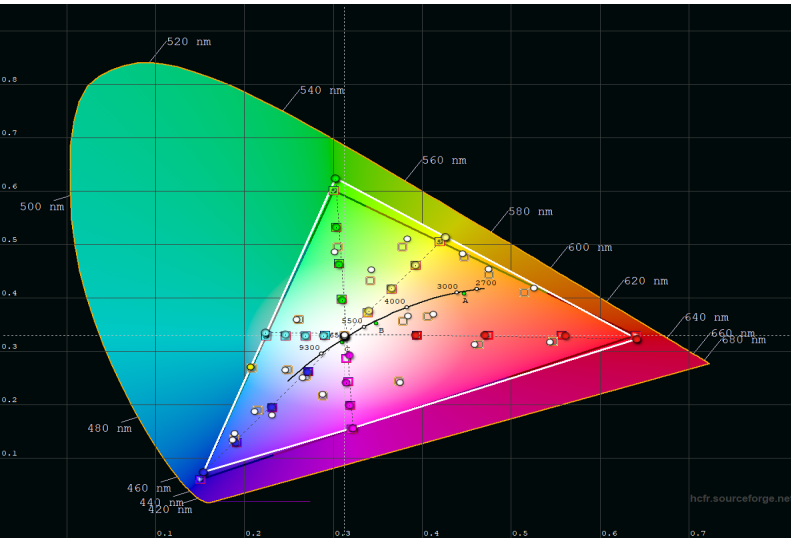
Calibration report for Wednesday, September 11, 2019 00:04:10



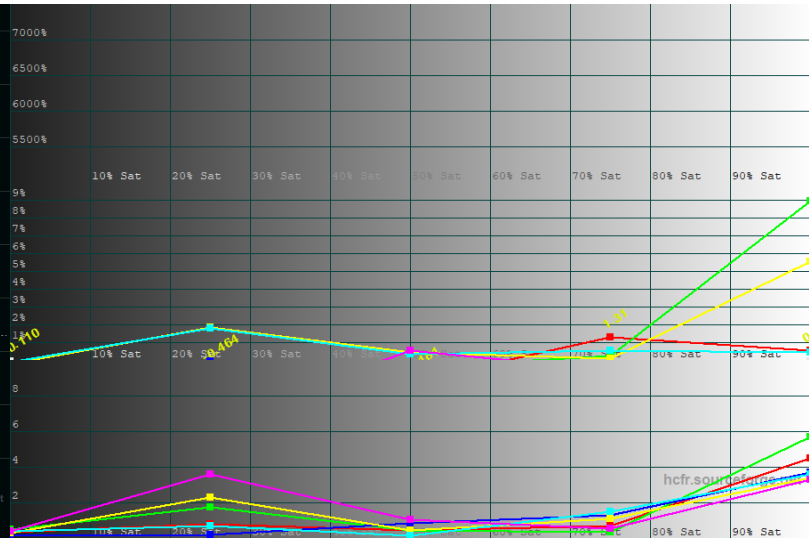
Grayscale/Grayscale dE



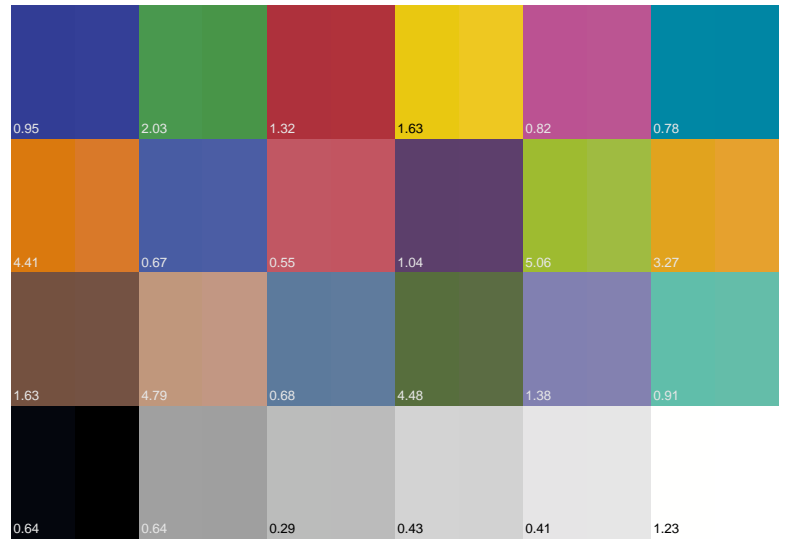
Correlated Color Temperature/Gamma



CIE Diagram HDTV Rec709



Saturation Sweep Luminance/Shifts



Color Checker Comparator

White: 2104.74 cd/m² Black: 0.7542 cd/m² CR: 2791:1
 Average measured gamma: 2.18, Color dE formula: [CIE76(uv)]
 Grayscale dE: 0.40/1.24 [CIE76(uv)] [Absolute Y w/gamma]
 Primary dE: Red 4.59, Green 5.73, Blue 3.72
 Secondary dE: Yellow 3.41, Cyan 3.64, Magenta 3.32
 Color checker sequence [GCD Classic]
 Colorchecker dE: 1.67/5.06
 Red Saturation dE: 1.39/4.52
 Green Saturation dE: 1.76/5.69
 Blue Saturation dE: 1.26/3.69
 Yellow Saturation dE: 1.53/3.42
 Cyan Saturation dE: 1.28/3.60
 Magenta Saturation dE: 1.80/3.59
 dE values are avg/max

Summary