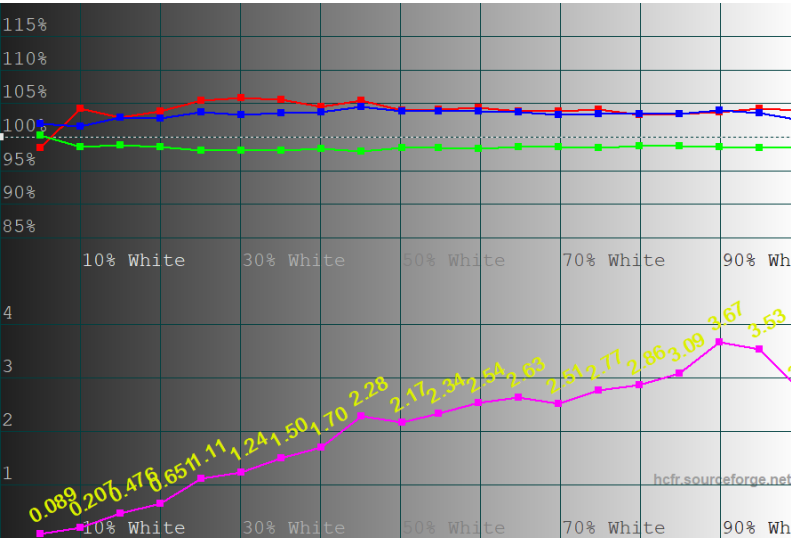


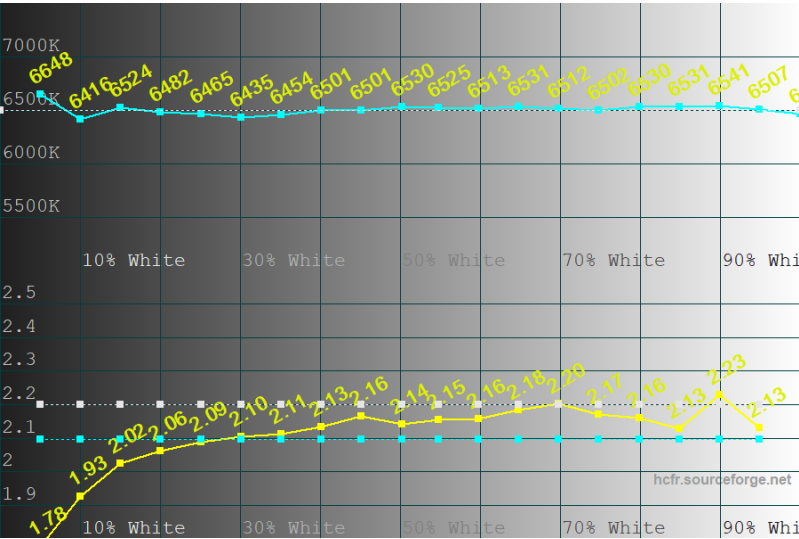


System data for file: Color Measures2
 Sensor: X-Rite i1 DisplayPro, ColorMunki Display
 Generator: View images [GDI]
 Calibration by:
 Display:
 Note:

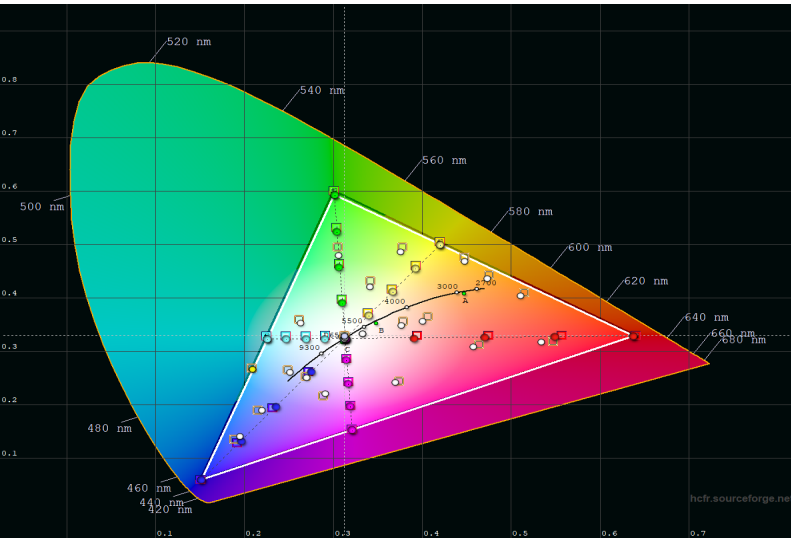
Calibration report for Saturday, May 07, 2022 22:41:28



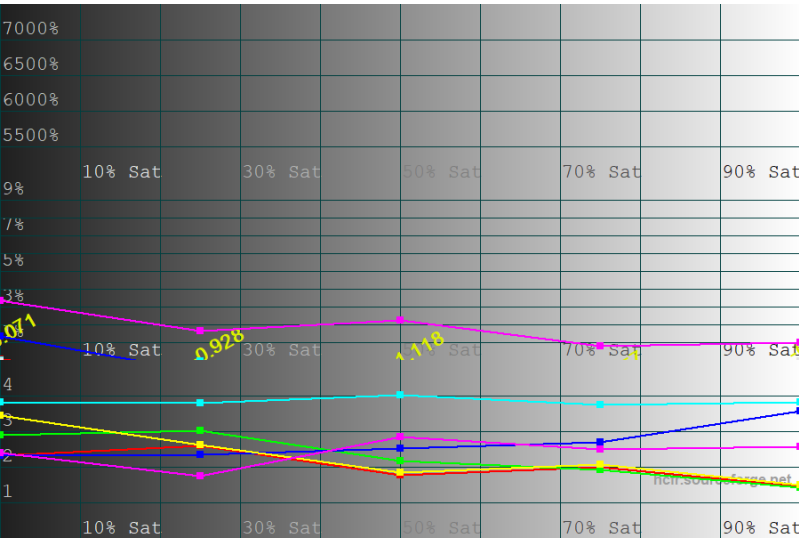
Grayscale/Grayscale dE



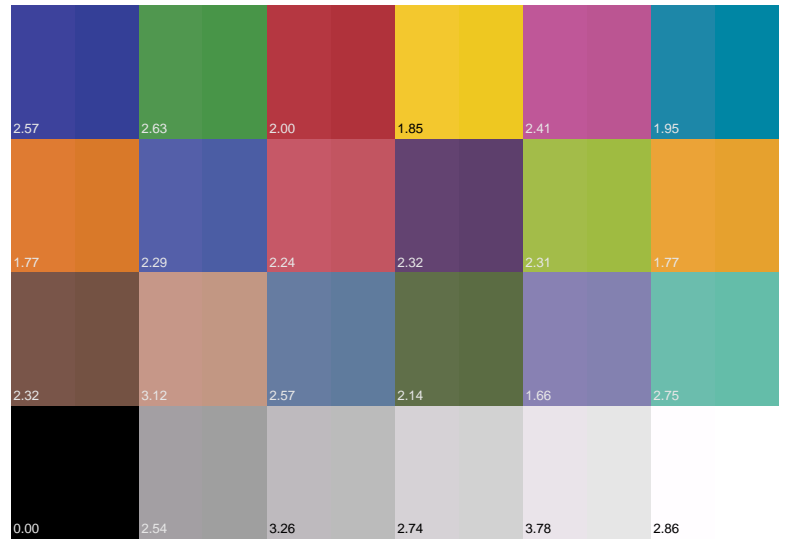
Correlated Color Temperature/Gamma



CIE Diagram HDTV Rec709



Saturation Sweep Luminance/Shifts



Color Checker Comparator

White: 139.38 cd/m² Black: 0.0000 cd/m² CR: Infinite
 Average measured gamma: 2.10, Color dE formula: [CIE76(uv)]
 Grayscale dE: 2.01/3.68 [CIE76(uv)] [Absolute Y w/o gamma]
 Primary dE: Red 1.45, Green 1.17, Blue 3.55
 Secondary dE: Yellow 1.41, Cyan 3.73, Magenta 2.40
 Color checker sequence [GCD Classic]
 Colorchecker dE: 2.33/3.78
 Red Saturation dE: 2.03/2.60
 Green Saturation dE: 2.29/3.02
 Blue Saturation dE: 2.69/3.57
 Yellow Saturation dE: 2.30/3.44
 Cyan Saturation dE: 3.84/4.02
 Magenta Saturation dE: 2.42/2.85
 dE values are avg/max

Summary