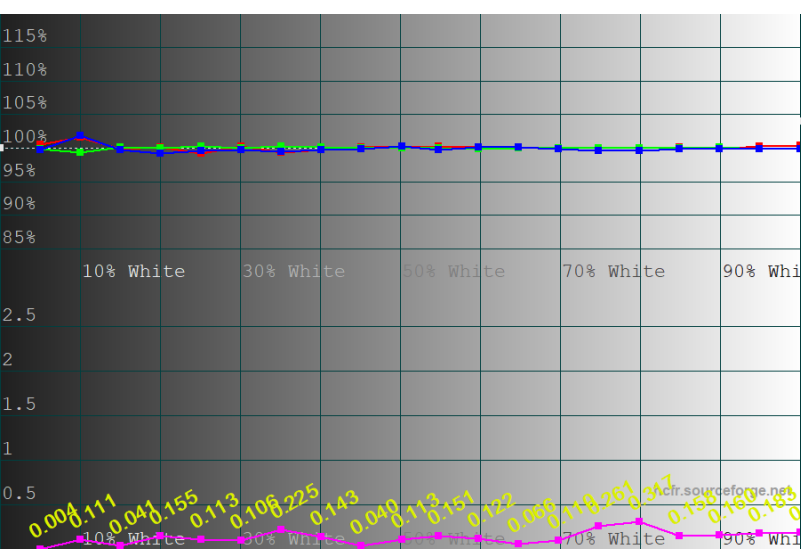


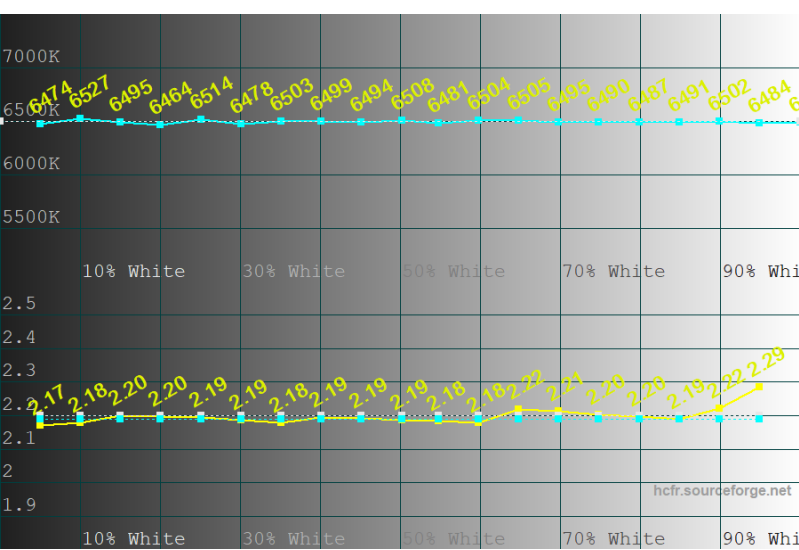


System data for file: Color Measures1
 Sensor: X-Rite i1 DisplayPro, ColorMunki Display
 Generator: View images [GDI]
 Calibration by:
 Display:
 Note:

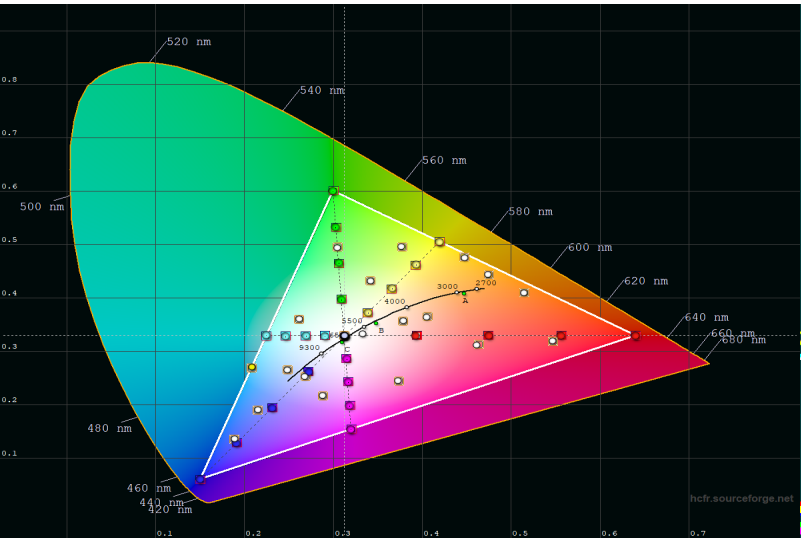
Calibration report for Saturday, May 07, 2022 22:35:32



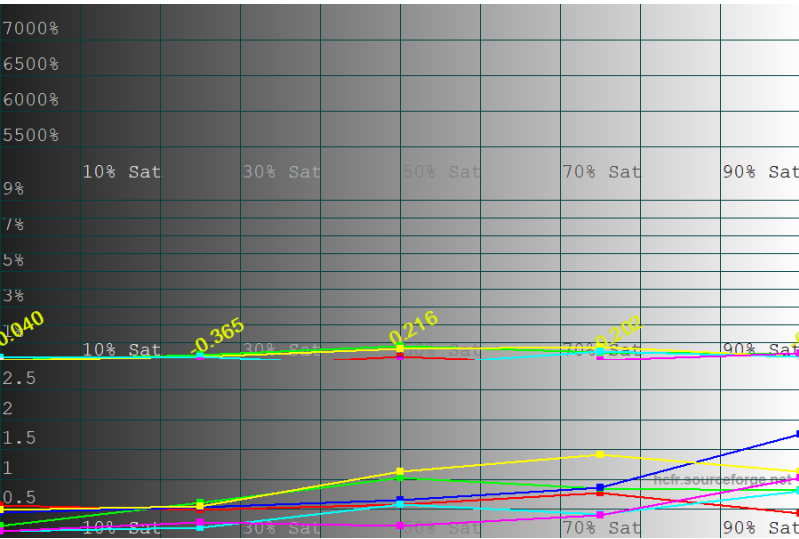
Grayscale/Grayscale dE



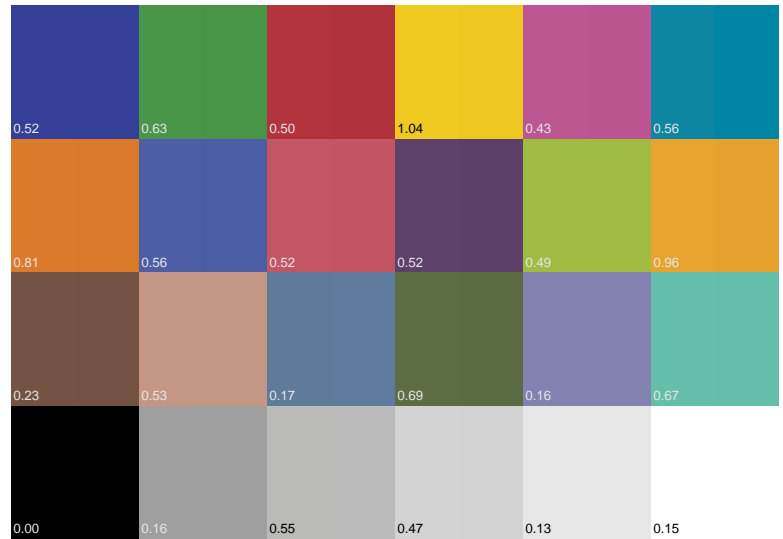
Correlated Color Temperature/Gamma



CIE Diagram HDTV Rec709



Saturation Sweep Luminance/Shifts



Color Checker Comparator

White: 154.30 cd/m² Black: 0.0000 cd/m² CR: Infinite
 Average measured gamma: 2.19, Color dE formula: [CIE76(uv)]
 Grayscale dE: 0.14/0.32 [CIE76(uv)] [Absolute Y w/o gamma]
 Primary dE: Red 0.38, Green 1.39, Blue 1.69
 Secondary dE: Yellow 1.37, Cyan 0.79, Magenta 0.87
 Color checker sequence [GCD Classic]
 Colorchecker dE: 0.48/1.04
 Red Saturation dE: 0.56/0.78
 Green Saturation dE: 0.70/1.03
 Blue Saturation dE: 0.84/1.75
 Yellow Saturation dE: 0.94/1.41
 Cyan Saturation dE: 0.42/0.80
 Magenta Saturation dE: 0.41/1.02
 dE values are avg/max

Summary